



\$245,500

**Lot 15 Reeand Lane
Church Hill, MD 21623
Community: The Meadows**

COMING SOON!

Get your contract in now for the chance to completely customize your floor plan, choose your colors and select the finishes you'd prefer!

All located in the charming Bozek, Inc. community of The Meadows located 10 minutes to downtown Chestertown or 30 minutes to the Bay Bridge. Community charm includes sidewalks, custom street lights and mature landscaping.

Completely Customizable Floor Plan!


- 3 Bedrooms
- 2 1/2 Bathrooms
- 2-Car Garage
- Nearly 1,700 sqft
- Common Sense Living Designs
- Add your own finishing touches!



Visit our website for a complete list of available properties, quick-delivery homes, custom to-be-built homes, land or resale homes!

www.bozekinc.com

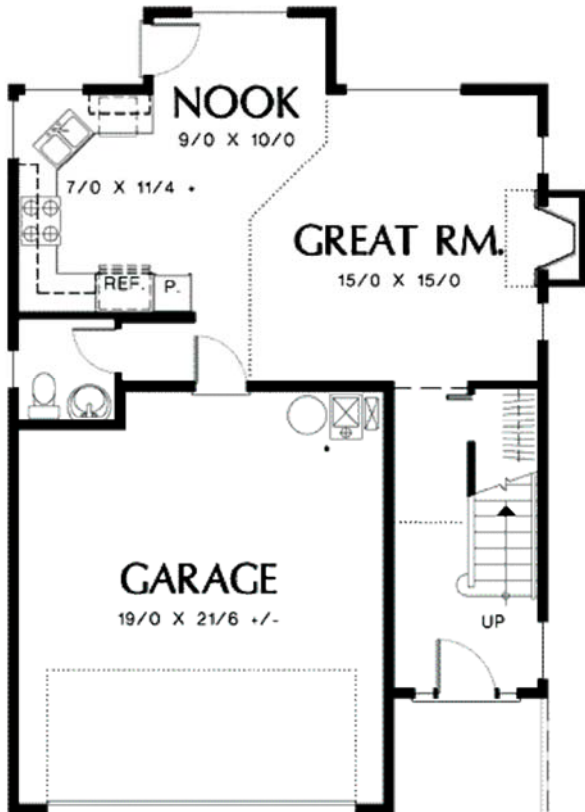
CONTACT: STACI SAPPINGTON
358 Pennsylvania Ave. Centreville, MD 21617
p: 410.758.2929 | 800.540.8808 | m: 410.829.3639
www.bozekinc.com | info@bozekinc.com

Featured on  houzz



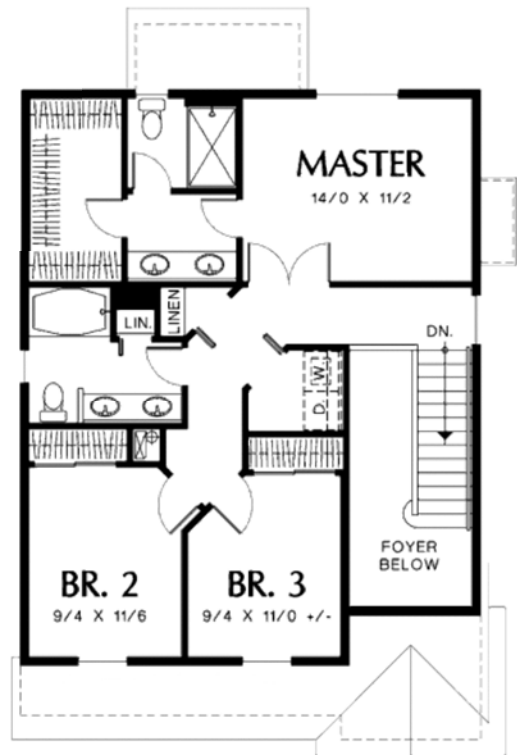
**BOZEK**
FINE HOMES

*Must use Builder's lender and title company. Other terms and conditions may apply.



FIRST FLOOR

43'-6"



SECOND FLOOR



\$245,500

Lot 15 Reand Lane
 Church Hill, MD 21623
 Community: The Meadows

CONTACT: STACI SAPPINGTON
 358 Pennsylvania Ave. Centreville, MD 21617
 p: 410.758.2929 | 800.540.8808 | m: 410.829.3639
 www.bozekinc.com | info@bozekinc.com



Featured on houzz



*Subject to Builder Conditions