



**\$257,500**

**126 Reeand Lane  
Church Hill, MD 21623  
Community: The Meadows**

**MUST SEE!!**

Applewood model features hardwood floors, granite countertops, custom features throughout, brick veneer foundation, paved driveway, landscaping package, full kitchen, stainless steel appliance package, Builder New Home Warranty program, covered front porch, 2-car garage, drop zone, master bathroom window seat, charging stations, walk-in closets...

All located in the charming Bozek, Inc. community of The Meadows located 10 minutes to downtown Chestertown or 30 minutes to the Bay Bridge. Community charm includes sidewalks, custom street lights and mature landscaping.



Visit our website for a complete list of available properties, quick-delivery homes, custom to-be-built homes, land or resale homes!

[www.bozekinc.com](http://www.bozekinc.com)

**Projected completion date: 12/31/2015  
See Reverse for Detailed Floor Plans  
MLS# QA8724100**

- 3 Bedrooms
- 2 1/2 Bathrooms
- 2-Car Garage
- \$5,000 Closing Help with Suitable Offer
- Hardwood Flooring
- Granite Countertops
- Stainless Steel Appliance Package
- "Smart" Features: Thermostat, Security & More
- Upgraded Cabinetry with Crown Molding
- Separate Laundry Room
- Modern, Craftsman Style Doors
- Upgraded Trim & Lighting Packages
- Built-in Drop Zone
- Master Bath Window Seat

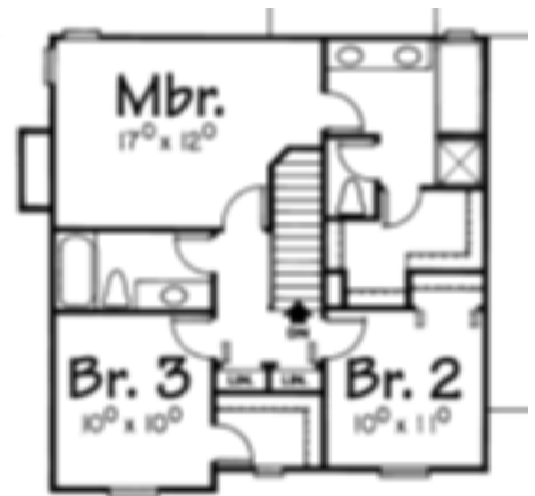
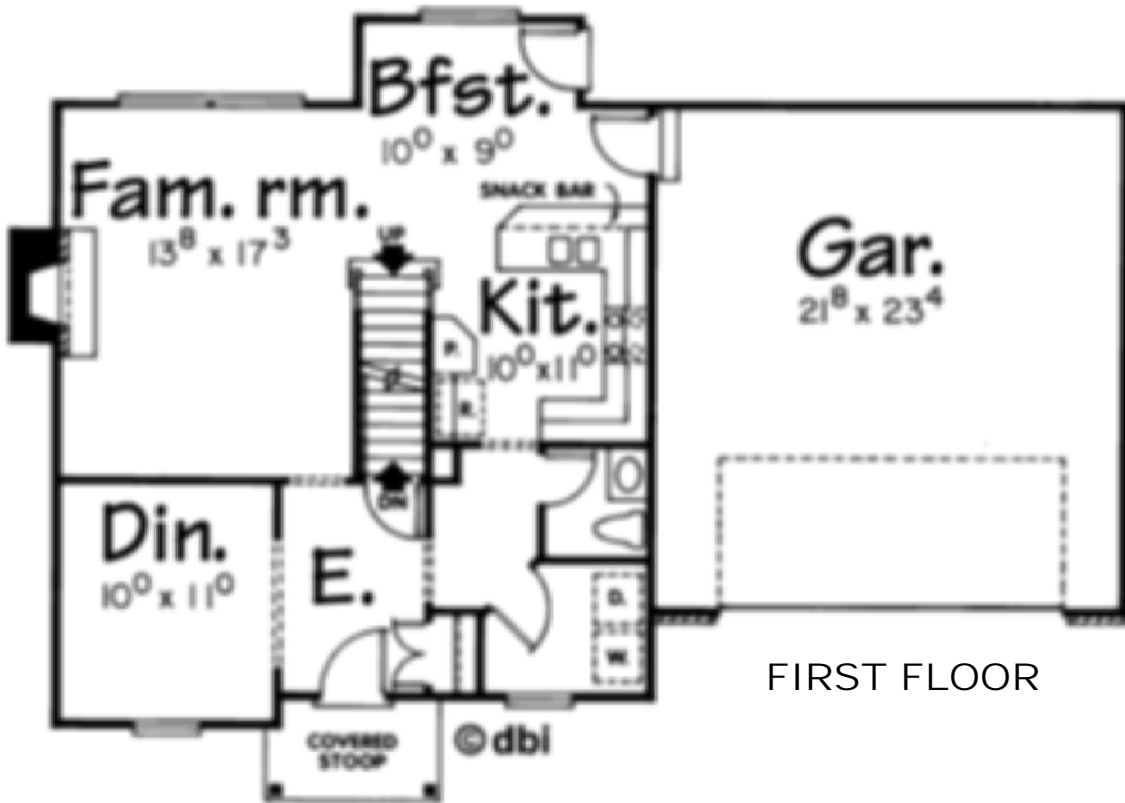
**CONTACT: STACI SAPPINGTON**  
**358 Pennsylvania Ave. Centreville, MD 21617**  
**p: 410.758.2929 | 800.540.8808 | m: 410.829.3639**  
**[www.bozekinc.com](http://www.bozekinc.com) | [info@bozekinc.com](mailto:info@bozekinc.com)**



Featured on  houzz



\*Subject to Builder Conditions



**\$257,500**

126 Reeand Lane  
 Church Hill, MD 21623  
 Community: The Meadows

**CONTACT: STACI SAPPINGTON**  
 358 Pennsylvania Ave. Centreville, MD 21617  
 p: 410.758.2929 | 800.540.8808 | m: 410.829.3639  
 www.bozekinc.com | info@bozekinc.com



Featured on houzz



\*Subject to Builder Conditions